

### Why MiTek Top-Hat profiles?

- ✓ Available in standard lengths or can be cut to length (dependent on quantity)
- ✓ Less wastage as it cannot be used for fire wood (non-combustible)
- ✓ Can be used with both timber and steel roof trusses
- ✓ Labour saving in loading and offloading time
- ✓ Galvanized for superior corrosion resistance
- ✓ No treatment required (resistant to fungus and borer attacks)
- ✓ Does not warp, so members are always straight and true
- ✓ Transport and storage space saving, e.g. bundle of 10 x 25mm MiTek Top-Hat profiles is the same size as one 38x38mm timber batten
- ✓ Simplified and faster fixing to roof trusses as no purlin clips are used and requires no slitting of under sheeting membrane



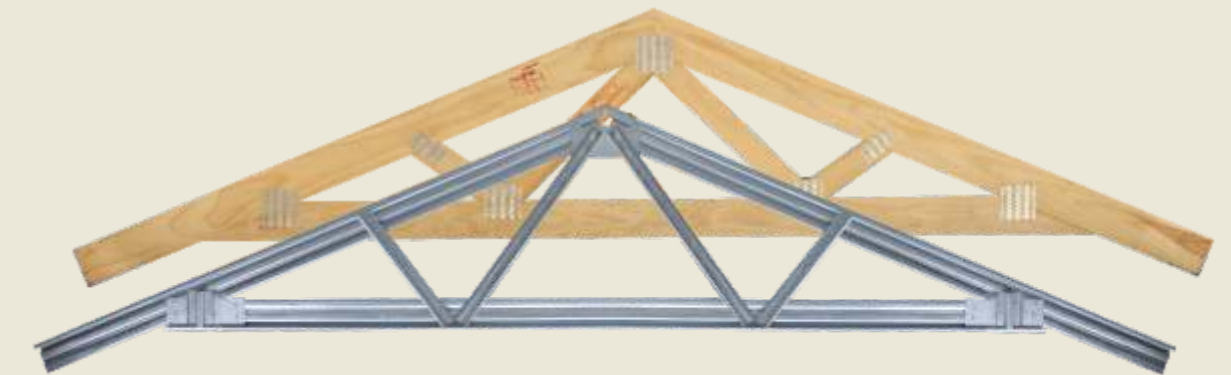
## TOP-HAT APPLICATION

MiTek Top-Hat profiles are steel hat channel profiles, manufactured from galvanized steel for superior corrosion resistance. These cost effective steel battens & purlins are compatible with timber and steel trusses for either tile or metal sheeting applications.

MiTek Top-Hat Profiles can be used as a batten, purlin, tilting fillet, ceiling brandering, runner, web cross brace or diagonal brace in both timber and steel roof structures.

In addition to being easy to transport (due to its lightweight properties), MiTek Top-Hat profiles are packaged in bundles of 10, enabling space saving storage and ease of handling. Top-Hat profiles are always straight ensuring a true and level roof.

The eco friendly solution.



*creating the advantage*

MiTek Industries South Africa (Pty) Ltd

MiTek Park, 754 16th Road, Randjespark, Ext. 34, Halfway House, 1685. Midrand (Head Office) Tel: + 27(0) 11 237 8700  
Cape Town Tel: 021 905 0244 • Durban Tel: 031 700 6332 • Port Elizabeth Tel: 041 360 2214  
www.mitek.co.za • email: marketing@mittek.co.za

\*MiTek Industries South Africa (Pty) Ltd, a subsidiary of the worldwide MiTek Group.



Please *like* and *follow* us on the following social media platforms:



@miteksa



@miteksa



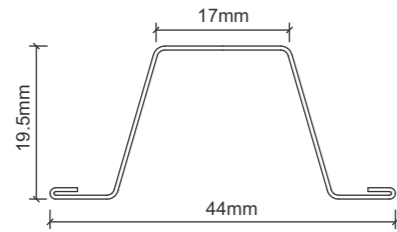
@miteksouthafrica



MiTek Industries South Africa



MiTek Industries South Africa

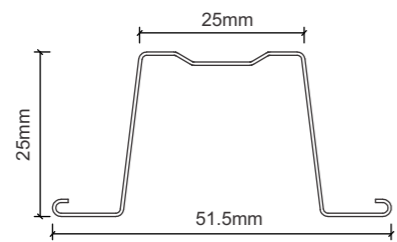
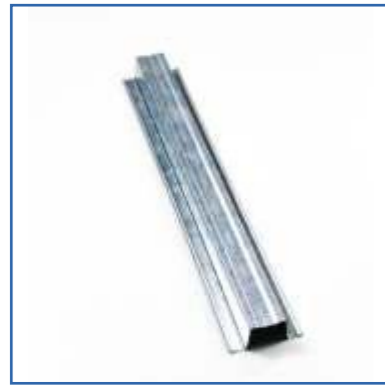


### 20mm TOP-HAT

USCEIL - 0.35mm

**Usage:**

- Exclusively as ceiling branding - 1400mm maximum truss spacing.

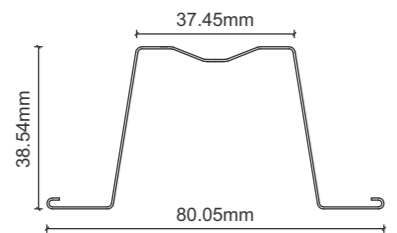
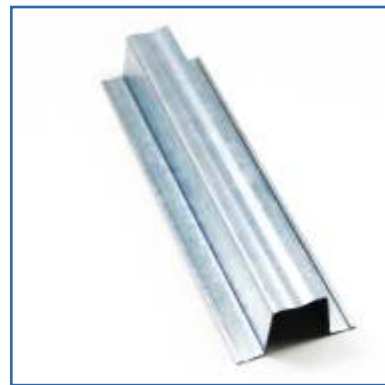


### 25mm TOP-HAT

USBAT25G - 0.5mm

**Usage:**

- As a tile batten - 1100mm maximum truss spacing.
- As web cross bracing (on web runners) - 830mm maximum truss spacing.
- As a Runner (on web or bottom chord) - 1400mm maximum truss spacing.



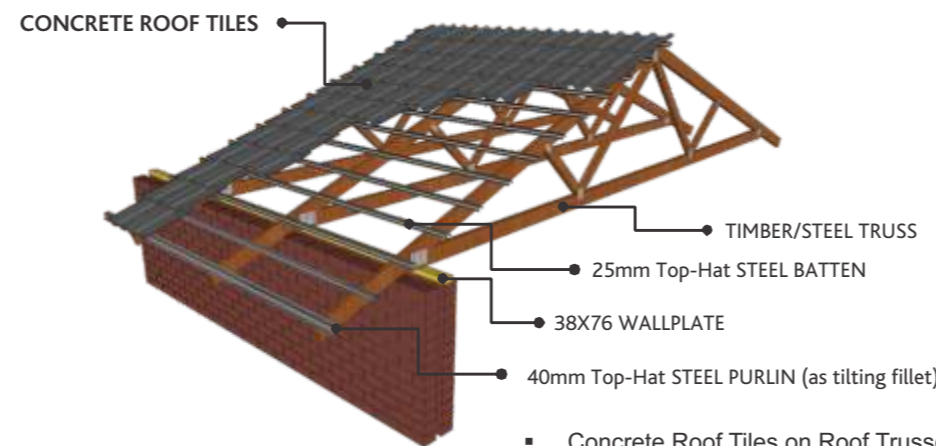
### 40mm TOP-HAT

USP0.5G - 0.5mm

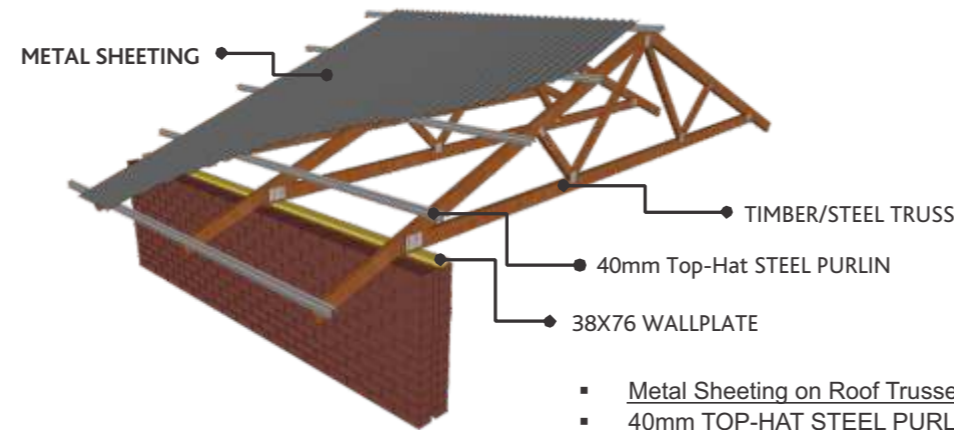
**Usage:**

- As a tilting fillet on tiled roofs - 1100mm maximum truss spacing.
- As a purlin on sheeted or metal tile roofs - 1400mm maximum truss spacing.
- As a runner or diagonal brace on all roofs - 1400mm maximum truss spacing.

## CONCRETE ROOF TILE & METAL SHEETING APPLICATIONS



- Concrete Roof Tiles on Roof Trusses:
- 25mm TOP-HAT STEEL BATTENS
- **MAX TRUSS SPACING: 1100mm**
- BATTEN SPACING: 320mm



- Metal Sheeting on Roof Trusses:
- 40mm TOP-HAT STEEL PURLINS
- **MAX TRUSS SPACING: 1400mm**
- PURLIN SPACING: 1150mm

## MiTek FIXING SCREWS AND NAILS



25mm Top-Hat profiles used as tile battens on timber roof trusses.



40mm Top-Hat profiles used as metal sheeting purlins on timber roof trusses.



20mm Top-Hat ceiling branding installed on timber roof trusses with a concrete tile roof covering.



Top-Hat profiles used as bracing members in an Ultra-Span light gauge steel roof structure.